

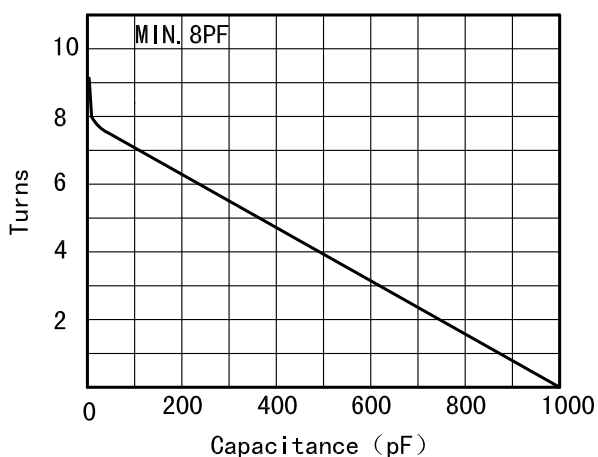
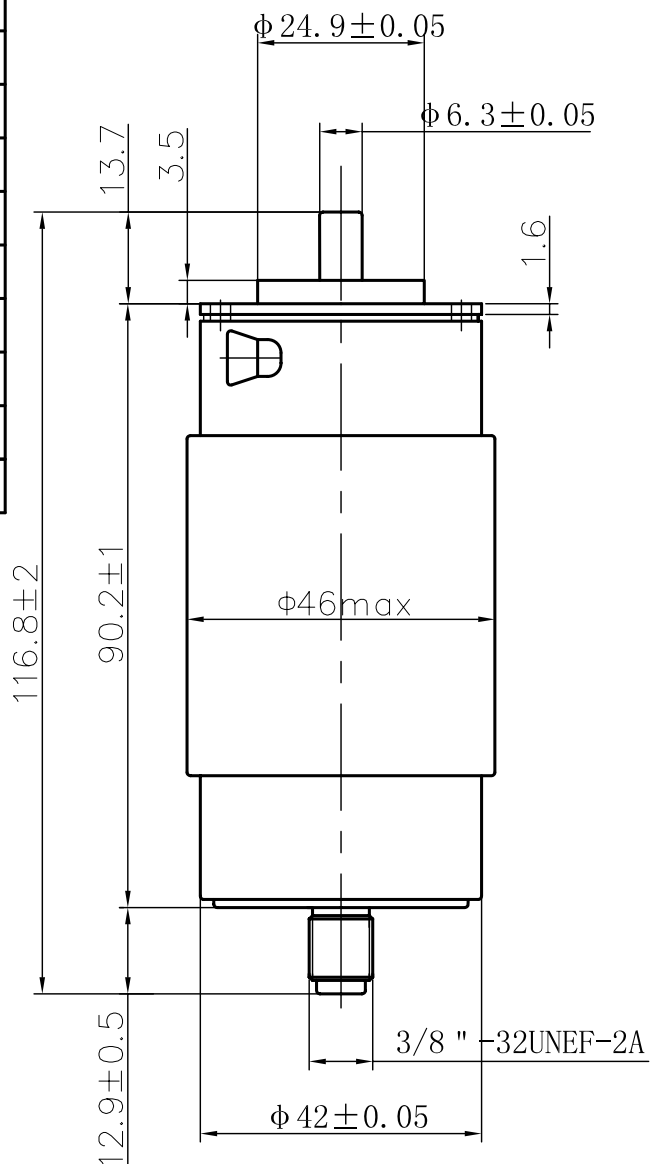


Data-Sheet-Variable Vacuum Capacitor
CKTB1000/2.1/65 (I)



www.glvac.cn

Specification	
Capacity C_{max} (nominal)	1000pF
Capacity C_{min} (nominal)	8pF
Voltage (Peak Test U_{pt} /Peak Working U_{pw})	3kV/1.8kV
Capacity tolerance (liner Range)	10%
Max. Current I_{max} at 13.56MHz with Conduction Cooling	65Arms 20W
Capacitance per turn	125.9pF/turn
Torque	$\leq 0.13Nm$
Net Weight	0.4kg



I_{max} at 25 °C ambient and 125 °C surface for convection and conduction (20w) cooling

